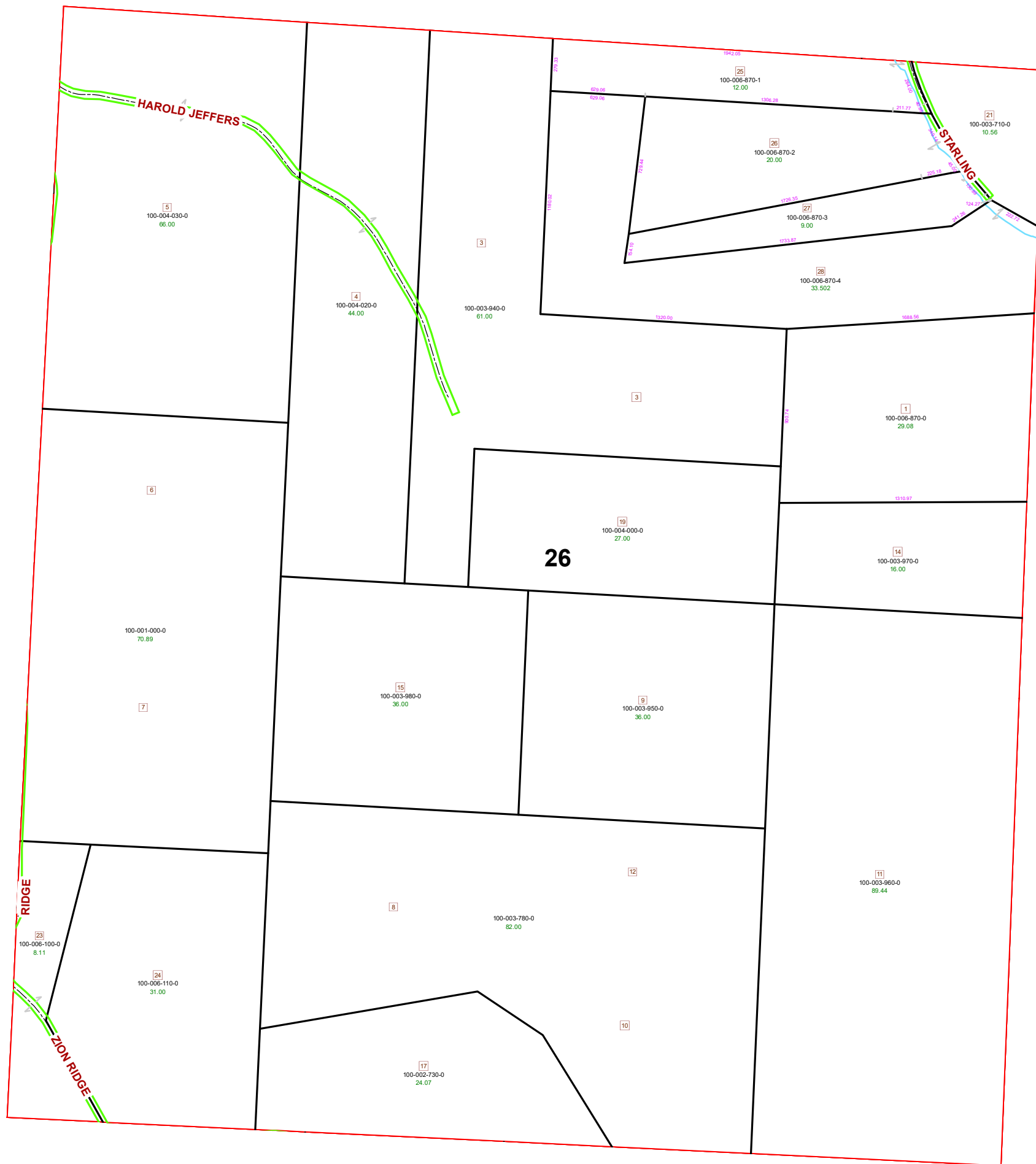
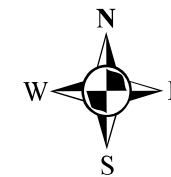


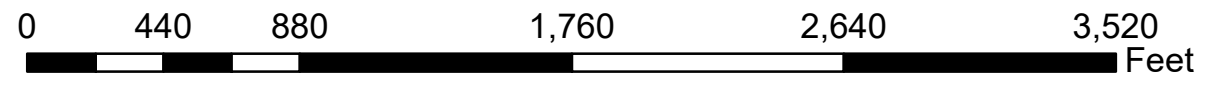
MARION TOWNSHIP SECTION 26 R12 TWP 8 MORGAN COUNTY, OH



PIN	Owner	VOL	PAGE	LegalDescr	Acres
100-006-870-1	BETTY SUE STARLING	OR227	1885	R12 T08 S26 SD 25	12
100-006-110-0	DUNN CONNIE S	OR209	131	R12 T08 S26 SD 24	31
100-006-100-0	DUNN CONNIE S	OR209	131	R12 T08 S26 SD 23	8.11
100-003-710-0	JANES CLAUDE A TRUSTEE	D.V 204	324	R12 T08 S26 SD 21	10.56
100-002-730-0	JEFFERS' TREE FARM LLC	OR145	430	R12 T08 S26 SD 17	24.07
100-003-780-0	JEFFERS' TREE FARM LLC	OR145	430	R12 T08 S26 SD 8-	82
100-003-960-0	JEFFERS' TREE FARM LLC	OR145	430	R12 T08 S26 SD 11	89.44
100-003-950-0	JEFFERS' TREE FARM LLC	OR145	430	R12 T08 S26 SD 9	36
100-003-980-0	JEFFERS' TREE FARM LLC	OR145	430	R12 T08 S26 SD 15	36
100-003-970-0	JEFFERS' TREE FARM LLC	OR145	430	R12 T08 S26 SD 14	16
100-004-000-0	JEFFERS' TREE FARM LLC	OR145	430	R12 T08 S26 SD 19	27
100-001-000-0	JEFFERS' TREE FARM LLC	OR211	3061	R12 T08 S26 SD 6-	70.89
100-003-940-0	JEFFERS' TREE FARM LLC	OR145	430	R12 T08 S26 SD 3	61
100-004-020-0	JEFFERS' TREE FARM LLC	OR145	430	R12 T08 S26 SD 4	44
100-004-030-0	JEFFERS' TREE FARM LLC	OR145	430	R12 T08 S26 SD 5	66
100-006-870-3	KATHY ANN STARLING	OR227	1899	R12 T08 S26 SD 27	9.002
100-006-870-2	MARGIE JO-ELLEN STARLING-FIERCE	OR227	1892	R12 T08 S26 SD 26	20.005
100-006-870-4	MAYS LINDA JEAN	OR227	1907	R12 T08 S26 SD 28	33.502
100-006-870-0	STARLING LARRY DAVID REVOCABLE TR	OR227	1912	R12 T08 S26 SD 1	29.098



Boundaries	
-----	Hidden
-----	Roads
-----	County
-----	Hydro
-----	Lot
-----	Parcel
-----	ROW
-----	Section
-----	Township
-----	Parcels



Disclaimer: The information that these maps contains is for reference purposes only. Please bring any errors to the attention of the Engineer's Office staff.
Thank you

Source: Morgan County Engineer's Office
Author: Marcia Wolfe
Date: 7/10/2020